



GRAND COUNTY

**WATERSHED
RECOVERY**

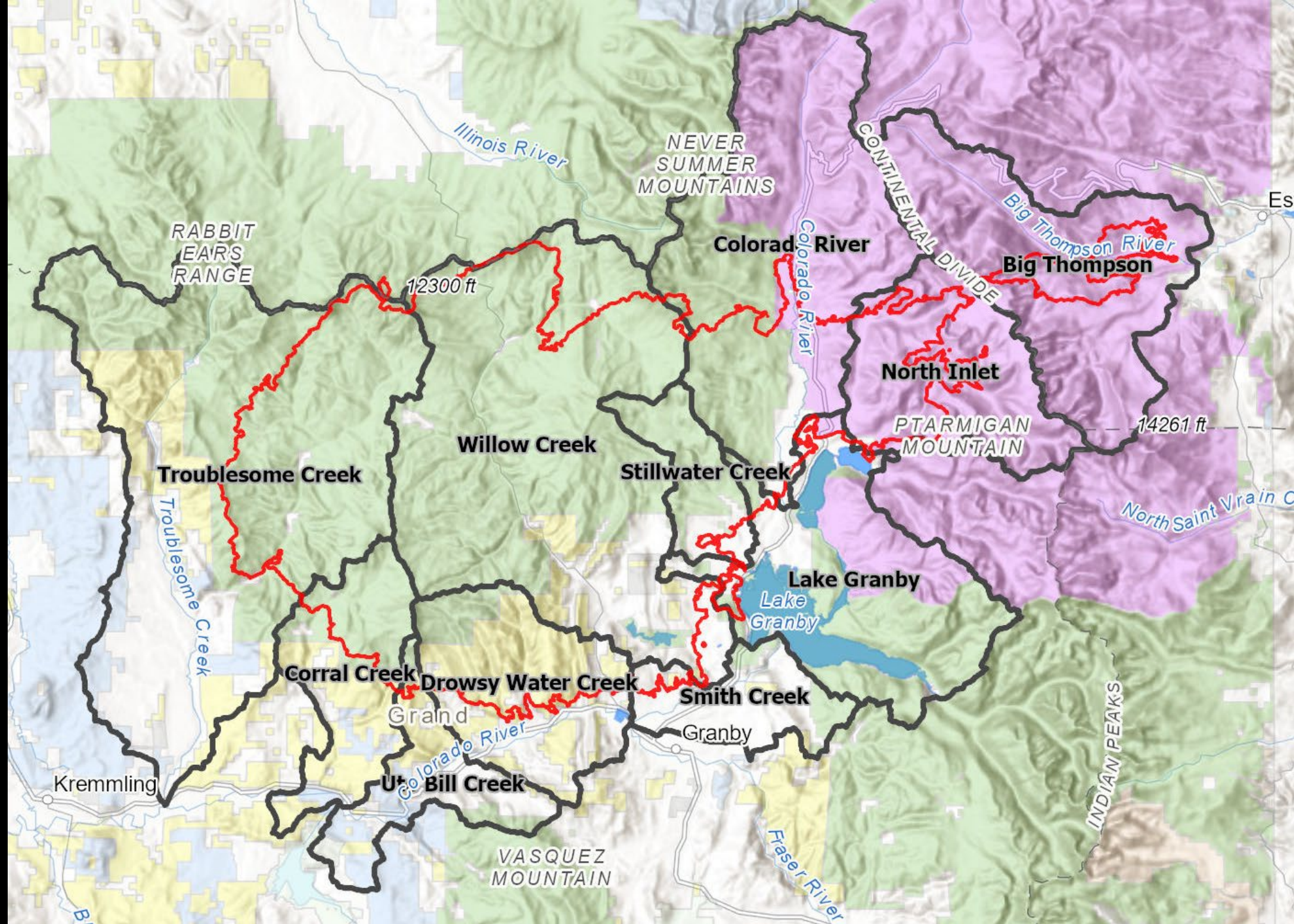
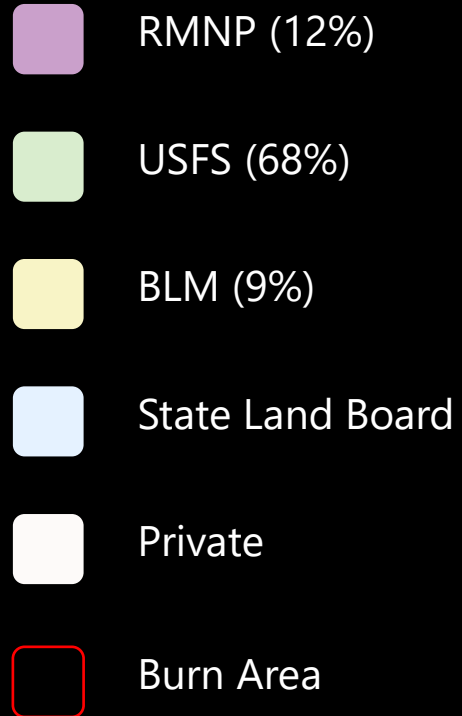
EMERGENCY WATERSHED PROTECTION PROGRAM

What? Where? Who?



PRIVATE LAND
19,757 ac (10%)

FEDERAL LAND
168,908 ac (90%)



Federal Lands

USFS, RMNP, BLM

Burn Area Emergency
Response (BAER)

Assessment

Identify
potential
threats to
values at risk

Treatment

State, Tribal, Private & USFS
Lands

NRCS

Emergency Watershed
Protection (EWP)

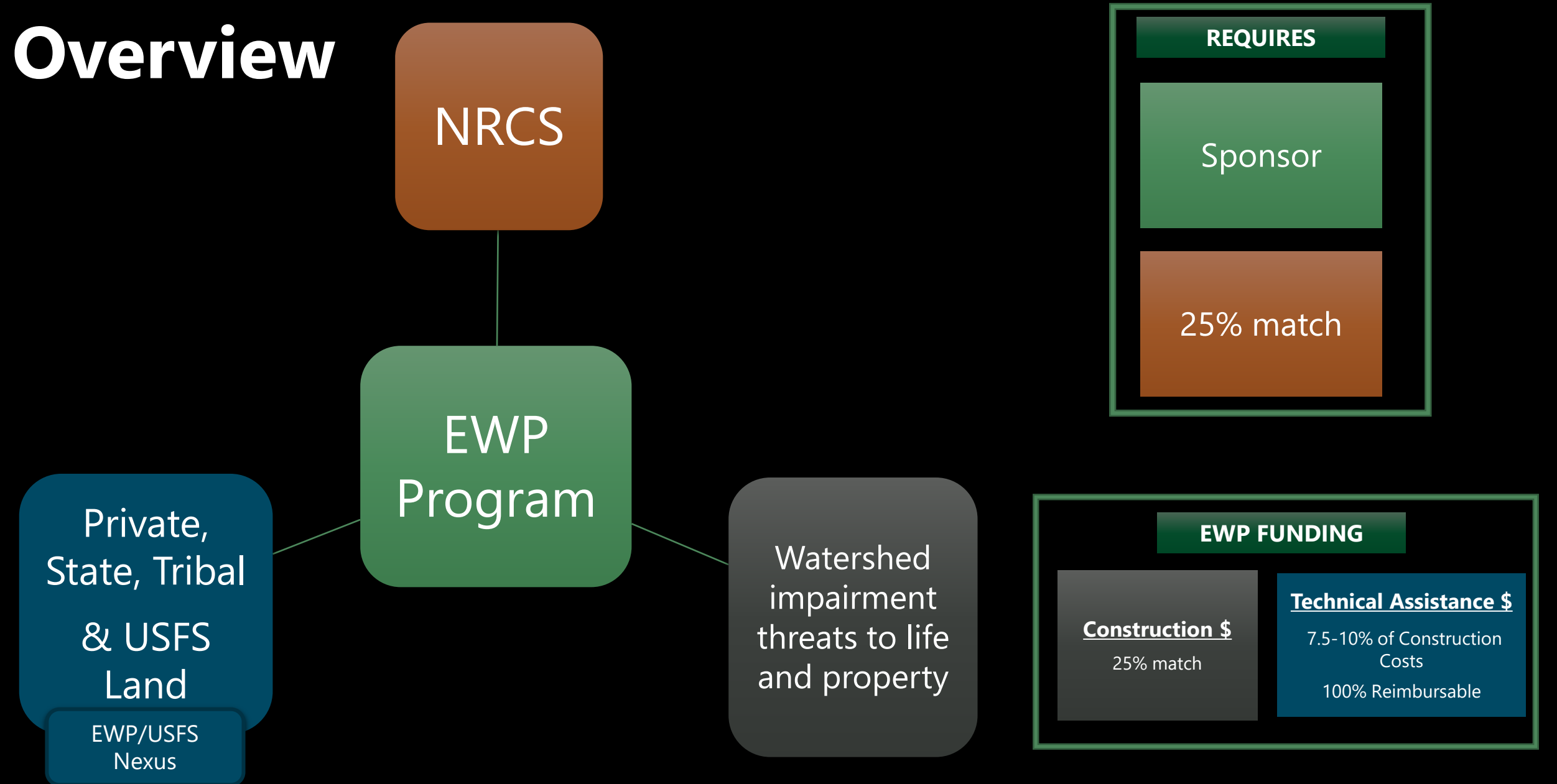
Assessment

Mitigate
threats to life,
property, and
infrastructure

Technical
Assistance and
Funding

Requires
Sponsor
(public agency,
local or tribal
gvt)

Overview



Sponsorship Responsibilities

Who?

Unit of State or Local Government,
State Agency, Tribe or Tribal
Organization

Assistance
Request

Landowners
outreach

Participation in
Damage Survey
Report

Access and
property rights

Permitting

Administer
technical
services

Administer
construction
contracts

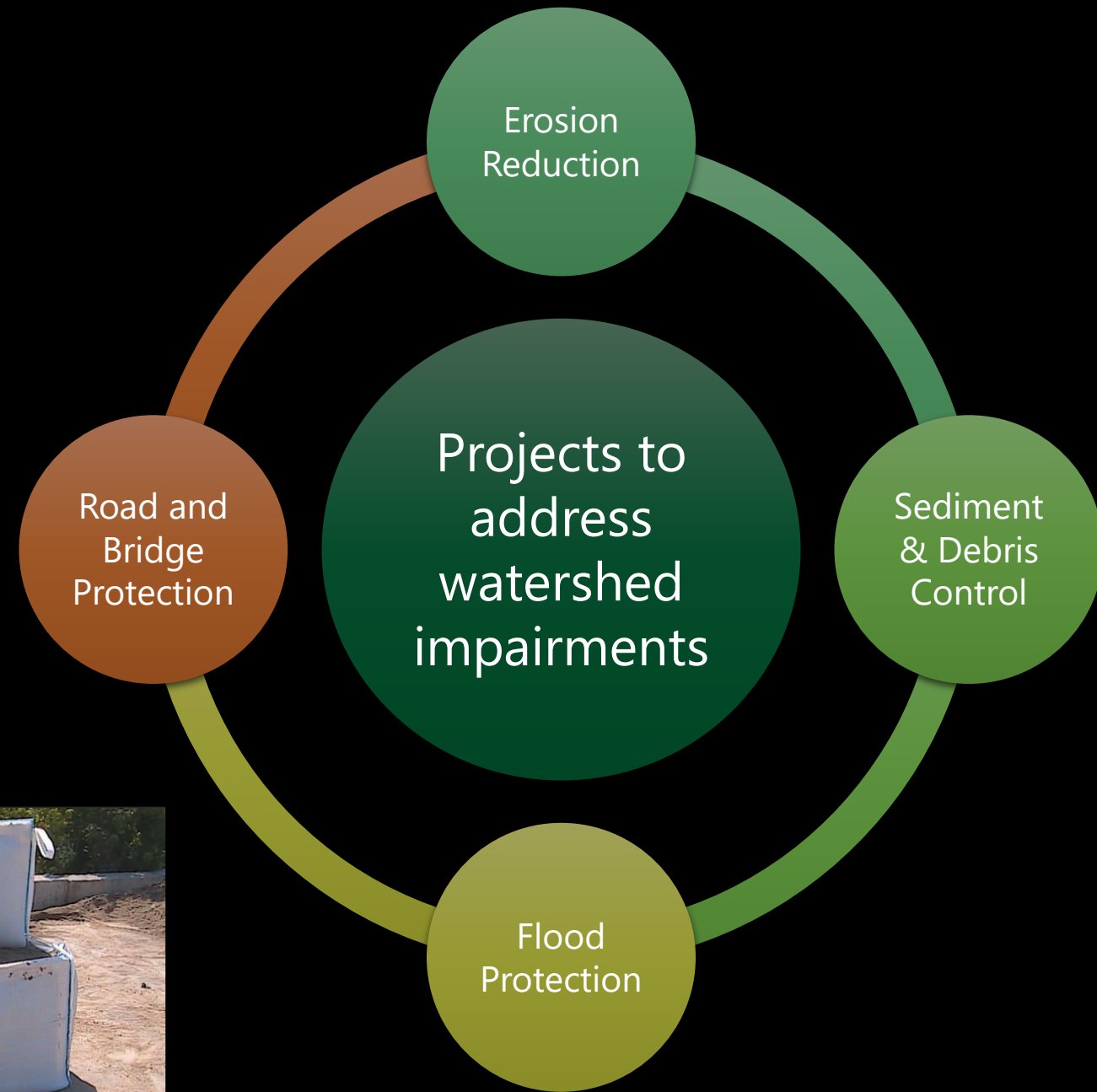
Cost-share (cash
or in-kind)

Manage NRCS
Technical
Assistance Funds

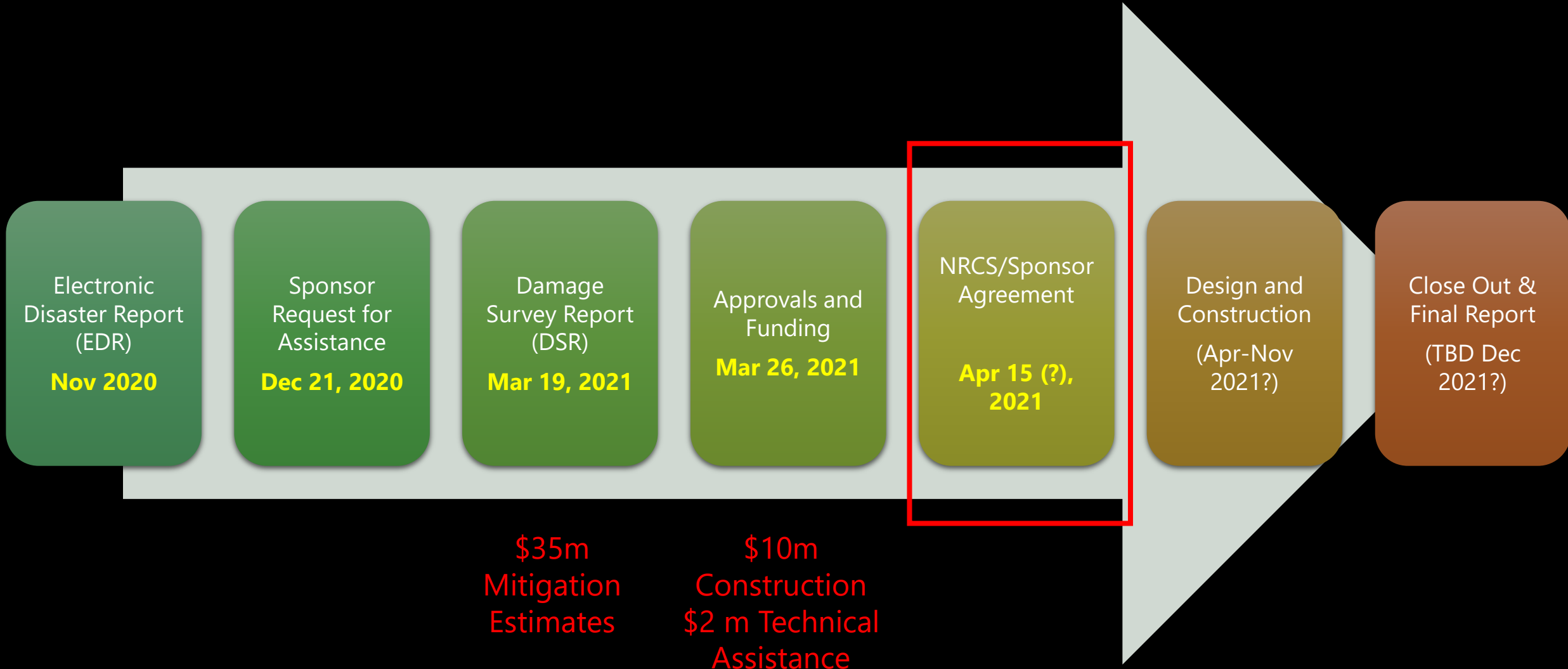
Manage and
locally allocate
EWP funds

O&M of projects

Work Authorized Examples



Process Overview

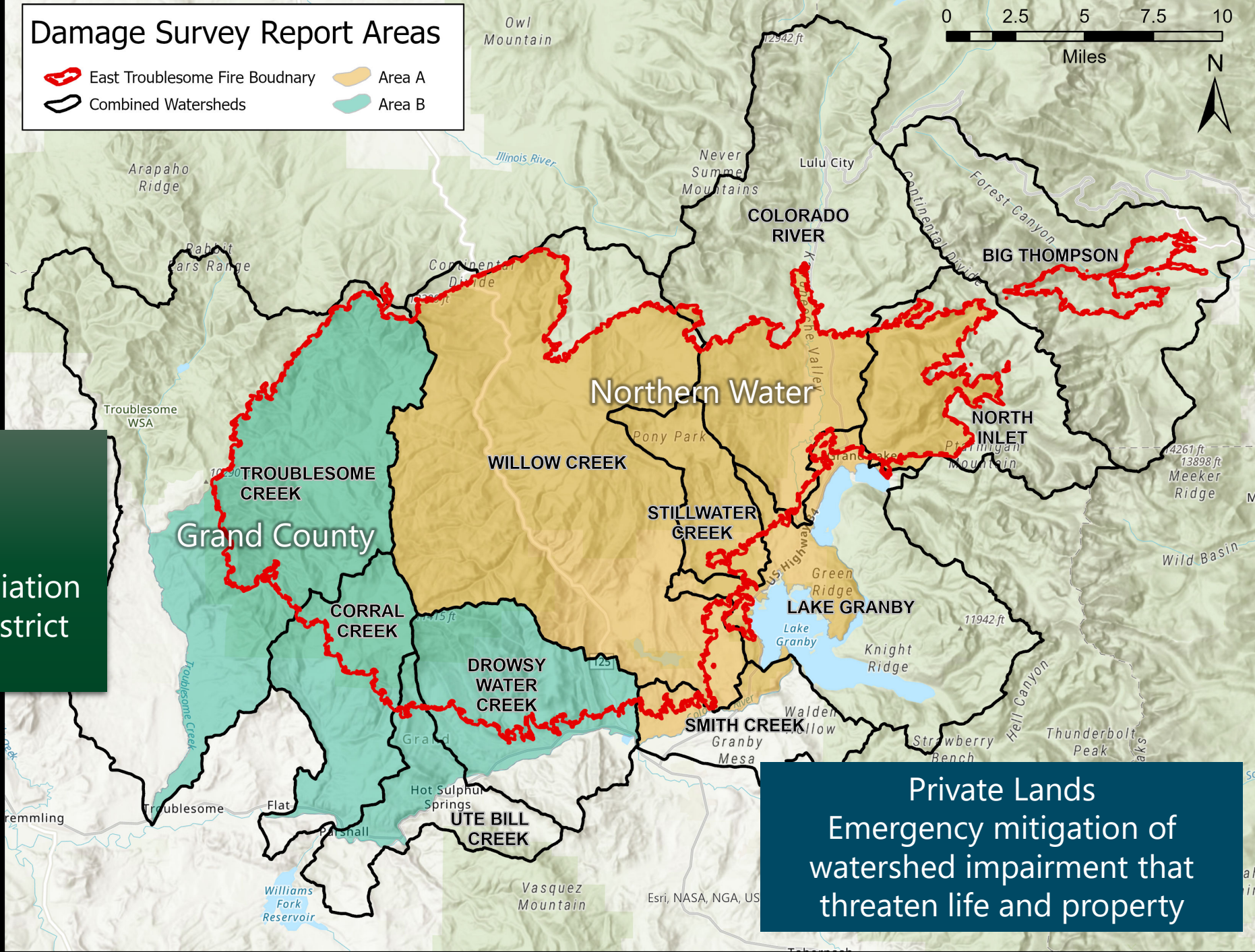


Emergency Watershed Protection Program Sponsorship

Partners

Northern Water
Grand County

Three Lakes Watershed Association
Middle Park Conservation District
River District



Private Lands
Emergency mitigation of
watershed impairment that
threaten life and property

EWP MOU

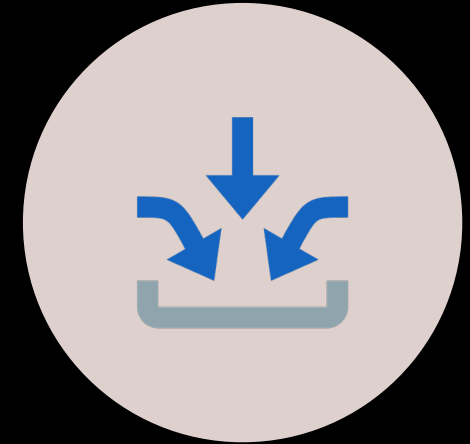


PARTNERSHIP

NORTHERN WATER
GRAND COUNTY
RIVER DISTRICT
TLWA
MWCD

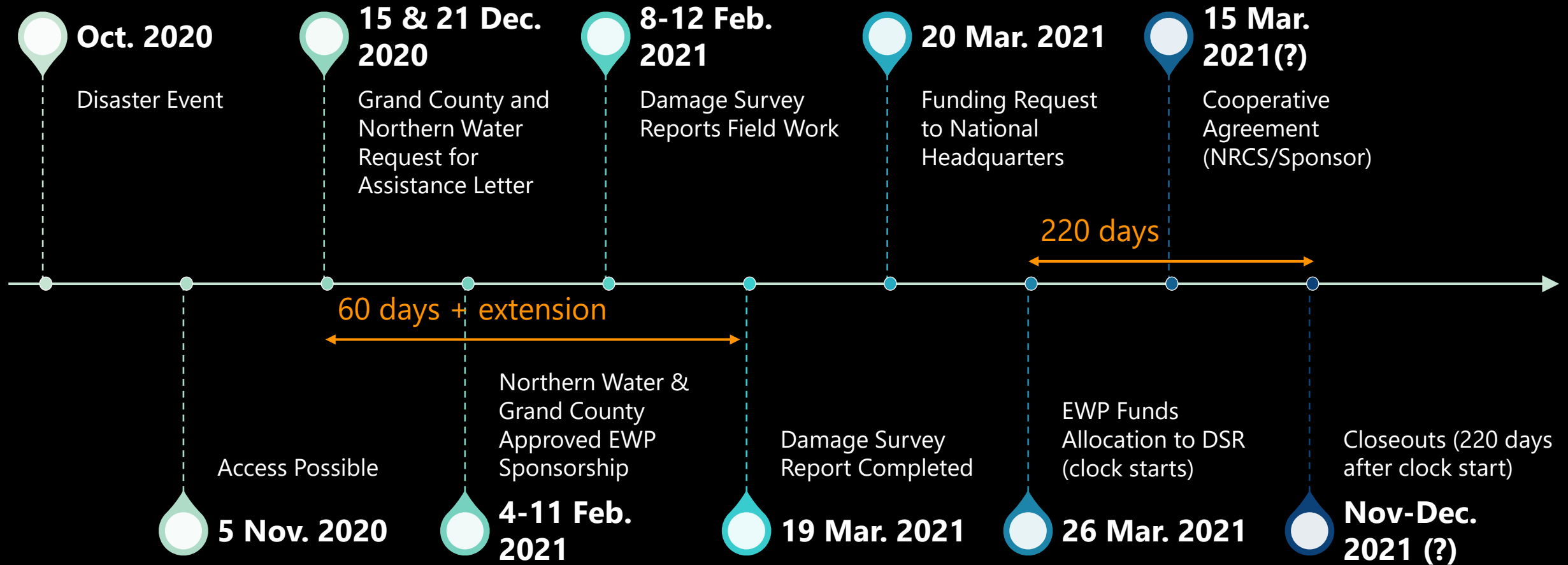


VOLUNTARY COLLABORATIVE FRAMEWORK



STAKEHOLDER INPUT OPPORTUNITIES

EWP Timeline



40+ Agencies

140+ Members



BLM

CDOT

CDPHE-WQCD

CFRI

Colorado
Coalitions

CDNR

Colorado Trout
Unlimited

Colorado
Water Center

CPW

CRWA

CRWCD

CSFS

CWCB

DHSEM

DNR

DOLA

Enginuity

Grand County

Grand County
CSU Extension

Grand County
Wildfire
Council

Grand Fire
Protection
District #1

JW Associates

Middle Park
Conservation
District

Middle Park
Water Cons.
District

Northern
Water

National Park
Service

NRCS

National
Weather
Service

Outstanding
Grand Lake

RMNP

Senator
Bennett's
Office

Three Lakes
Watershed
Association

Town of Estes
Park

Town of Grand
Lake

Town of Hot
Sulphur
Springs

Trout
Unlimited

UCRWG

USACE

USBR

USFS

USGS

Questions? Comments?

watershedrecovery@northernwater.org (AREA A)

watershedrecovery@co.grand.co.us (AREA B)

